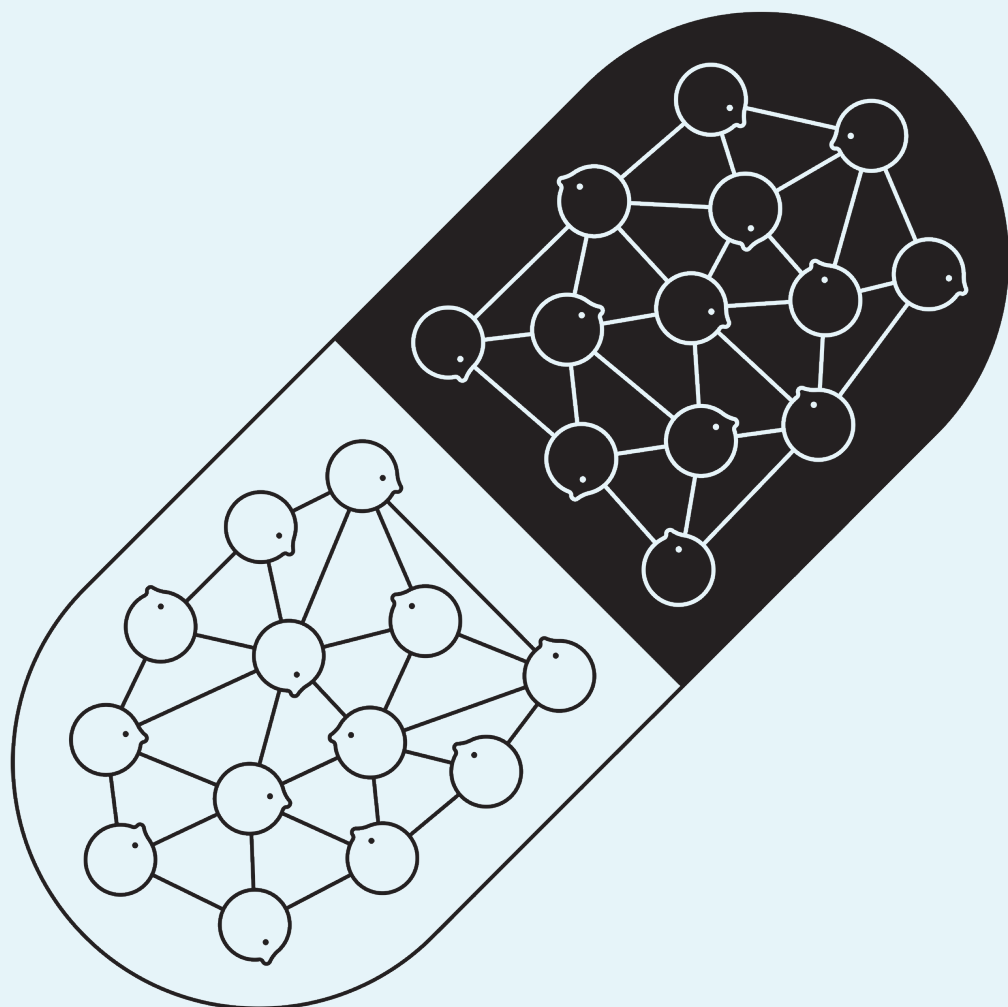


---

# HEALTHCARE: ADDRESSING THE FUTURE

---

WEDNESDAY 31ST OCTOBER 2018  
7:45AM-4:00PM  
THE ROYAL SOCIETY OF MEDICINE  
LONDON W1



---

# AGENDA

---

---

## Registration and Breakfast

7:45am–8:30am

---

## Opening Remarks

8:35am

- Andrew Hynard | Chief Executive, The Howard de Walden Estate  
Rt Hon Professor the Lord Kakkar | Conference Co-chair  
Professor Dame Jane Dacre | Conference Co-chair
- 

## Session 1 — Health and Innovation: Policy and Perception

8:45am–9:15am

- Dr Victor Dzau | US National Academy of Medicine
- 

## Session 2 — The Future Challenges of Healthcare

9:15am–10:30am

- Mark Britnell | KPMG International  
‘The Economic and Commercial Imperative’
  - Professor Sir Bruce Keogh | Birmingham Women’s & Children’s NHS Foundation Trust  
‘The Clinical and Academic Imperative’
  - Q&A chaired by Rt Hon Professor the Lord Kakkar and Professor Dame Jane Dacre
- 

## Coffee Break

10:30am–10:55am

---

## Session 3 — Innovation to Address the Challenge

11:00am–12:15pm

- Nicolaus Henke | McKinsey & Company  
‘A Global Perspective’
  - Professor Sir John Tooke | Academic Health Solutions  
‘The Transformative Potential of Academic Health Alliances’
  - Q&A chaired by Rt Hon Professor the Lord Kakkar and Professor Dame Jane Dacre
- 

## Session 4 — Life Sciences: A National Strategy

12:15pm–1:00pm

- Professor Sir John Bell | University of Oxford
  - Q&A chaired by Rt Hon Professor the Lord Kakkar and Professor Dame Jane Dacre
- 

## Lunch

1:00pm–2:10pm

---

## Session 5 — Transforming Healthcare

2:15pm–3:45pm

- Professor Dame Anne Johnson | University College London  
‘Population Health’
  - Sir Simon Wessely | King’s College London  
‘Mental Health’
  - Professor Andrew Morris | Health Data Research UK  
‘Data and Digital Transformation’
  - Q&A chaired by Rt Hon Professor the Lord Kakkar and Professor Dame Jane Dacre
- 

## Closing Remarks

3:45pm–4:00pm

- Rt Hon Professor the Lord Kakkar and Professor Dame Jane Dacre

---

# WELCOME



---

A very warm welcome to this, the inaugural Harley Street Medical Area Healthcare Conference, delivered by The Howard de Walden Estate.

The Estate, which has been in existence for over 200 years, is run by a private family-owned property company that adopts a long term approach to its stewardship of this rather special part of London. Our assets, all of which are found within Marylebone, consist of residential, office, retail, leisure and educational properties, but the most valuable in rental income terms are our medical assets, primarily located in and around the world-renowned Harley Street.

The fortunes of the Estate are entirely dependant upon the success and relevance of our occupiers, and it is for that reason that we have worked so hard to create and nurture the Harley Street Medical Area. Our role as property owners is to ensure that our medical facilities provide a suitable stage on which the best practitioners in their fields can treat patients from across the globe.

So much is riding on the fortunes of medicine, associated research, education and life sciences. Together, these sectors employ thousands of people here in London and make a very significant contribution to both the country's economy and its leadership position in global healthcare. We aim to play our part by proactively engaging with the medical sector, fostering collaboration and seeking a better understanding of the issues, opportunities and threats by which it is confronted.

---

With that in mind, we are extremely fortunate to have the Rt Hon Professor the Lord Kakkar as a non-executive director of The Howard de Walden Estate.

He is playing an invaluable role by helping us navigate the exciting, challenging and rapidly evolving medical landscape. To enable us to create a forum for debate among the leaders in their fields, he has drawn together an exceptional line-up of speakers for today's conference, and we really appreciate their participation. We are delighted that the day will be co-chaired by Professor Dame Jane Dacre, and there is no doubt that stimulating conversations will flow.

Thank you for being our guests, and I am delighted that you were able to accept our invitation to attend. All I ask is that we collectively engage, participate and contribute to today's discussions and ongoing debate.

**Andrew J Hynard**

*Chief Executive*

The Howard de Walden Estate

---

# CO-CHAIRS



---

## Opening Remarks

8:35am

---

### **Rt Hon Professor the Lord Kakkar**

University College London

Lord Kakkar is professor of surgery at University College London, chairman of University College London Partners Academic Health Science Partnership and director of the Thrombosis Research Institute, London. He completed his medical degree at King's College London and received his PhD from Imperial College London. His research

interests include the prevention and treatment of venous and arterial thromboembolic disease and cancer-associated thrombosis. Lord Kakkar was made a life peer in 2010 and sits on the cross benches of the House of Lords. He is chairman of the House of Lords Appointments Commission and UK business ambassador for Healthcare and Life Sciences. Lord Kakkar was appointed a member of the Privy Council in December 2014, and chairs the Judicial Appointments Commission.



---

## Opening Remarks

8:35am

---

### **Professor Dame Jane Dacre**

University College London

Dame Jane Dacre is a consultant physician and rheumatologist and professor of medical education at University College London. She is president of the Medical Protection Society and is leading the Gender Pay Gap Review for Medicine. She is the immediate past-president of the Royal College of Physicians and was vice chair of the Academy of Medical Royal Colleges, director of UCL Medical School, managing

director of MRCPUK and academic vice president of the RCP, and a General Medical Council council member. In 2012, Dame Jane won the medicine and healthcare category of the Women in the City Woman of Achievement Awards. In 2013, she was named on the Health Service Journal's inaugural list of 50 inspirational women in healthcare. She has featured in the science and medicine category for Debrett's 500 people of influence in 2015, 2016 and 2017, and was named on the HSJ top 100 list from 2014 to 2017.



# SPEAKERS



---

## Session 1

### Health and Innovation: Policy and Perception

8:45am–9:15am

---

#### Dr Victor Dzau

US National Academy of Medicine

Dr Victor Dzau is president of the US National Academy of Medicine. His own research laid the foundation for the development of ACE inhibitors, used to treat hypertension and heart failure, and he is a pioneer in gene therapy and cardiac regeneration. He chairs the NIH Cardiovascular Progenitor Cell Consortium, and the scientific boards of the Qatar Genome Project, the Peter Munk

Cardiac Center in Toronto, and the University of Glasgow's Institute of Cardiovascular & Medical Sciences. He is a member of the Health Biomedical Sciences Council of Singapore and was chair of the World Economic Forum's Global Agenda Council on Precision Medicine. He has received numerous awards including the Max Delbrück Medal, the Gustav Nylin Medal, the Kurt Polzer Prize, the Ellis Island Medal of Honor, and the Distinguished Scientist Award of the American Heart Association.



---

## Session 2

### The Future Challenges of Healthcare

9:15am–10:30am

---

#### Mark Britnell

KPMG International

Mark Britnell is global chairman and senior partner for healthcare, government and infrastructure at KPMG International, where he is responsible for \$6 billion in revenues, supporting 40,000 staff across 157 countries. He started his career in the NHS, where he held a number of senior posts before becoming chief executive of University Hospitals Birmingham in 2000. He went

on to be chief executive of the NHS South Central region, before joining the NHS Management Board as director general at the Department of Health. He joined KPMG in 2009. He is a member of the Global Agenda Council on the Future of the Health Sector for the World Economic Forum and sits on the advisory board of the Peking University China Center for Health Development Studies. Mark is the author of *In Search of the Perfect Health System*, which won a BMA Medical Book Award in 2016.



---

## Session 2

### The Future Challenges of Healthcare

9:15am–10:30am

---

#### Professor Sir Bruce Keogh

Birmingham Women's and Children's NHS Foundation Trust

Sir Bruce Keogh is chair of the Birmingham Women's and Children's NHS Foundation Trust. He held the chair of cardiac surgery at University College London before being appointed medical director of the NHS in the Department of Health in 2007, subsequently migrating to become the national medical director of NHS England between

2013 and 2018. For a decade he was the professional lead for doctors in the NHS and was responsible for clinical policy and strategy. He was the sponsor for NICE, the Healthcare Commission and the National Patient Safety Agency. With a long-standing interest in the measurement of clinical outcomes, he served on the boards of the Commission for Health Improvement and the Healthcare Commission between 2002 and 2007. He was knighted for services to medicine in 2003.

# SPEAKERS



---

## Session 3

### Innovation to Address the Challenge

11am–12:15pm

---

#### Nicolaus Henke

McKinsey & Company

Nicolaus Henke is a senior partner at McKinsey & Company, where he advises companies on improving decision making and performance through advanced analytics, artificial intelligence and end-to-end data-enabled transformations. He is a global leader of McKinsey Digital and Analytics, overseeing work across artificial intelligence, technology, and partnerships between McKinsey and the wider

data and computing ecosystem. Nicolaus is also chairman of a McKinsey company, QuantumBlack, an advanced analytics firm operating at the intersection of strategy, technology and design to improve performance. Nicolaus graduated with distinction with a master's degree and a doctorate in business from the University of Münster, Germany and holds a master's in public administration from Harvard, where he was a John J McCloy scholar.



---

## Session 3

### Innovation to Address the Challenge

11am–12:15pm

---

#### Professor Sir John Tooke

Academic Health Solutions

Sir John Tooke is one of the co-founders of Academic Health Solutions, an international enterprise providing bespoke, expert advice in the health and life science sectors to optimise population health and wealth gain. He has over 20 years' experience developing and leading successful academic health alliances. Until August 2015, John was vice provost (health) at University College

London, head of the UCL School of Life and Medical Sciences, and academic director of the university's academic health science partnership, UCL Partners. He combined these roles with the presidency of the Academy of Medical Sciences. Sir John is the past chair of both the Medical Schools Council and the UK Healthcare Education Advisory Committee. His clinical and research interests have focussed on diabetes and its vascular complications.



---

## Session 4

### Life Sciences: A National Strategy

12:15pm–1:00pm

---

#### Professor Sir John Bell

University of Oxford

Sir John Bell is regius professor of medicine at Oxford University. He served as president of the Academy of Medical Sciences from 2006 to 2011 and chaired the Office for the Strategic Coordination of Health Research until 2017. His research interests are in the area of autoimmune disease and immunology. In 1993, he founded the Wellcome Trust Centre for Human Genetics, one of the world's

leading centres for complex trait common disease genetics. In 2008 he joined the Gates Foundation Global Health Advisory Board which he has chaired since 2012. He sits on the board of Genomics England Limited and chairs its Science Advisory Committee. In 2015, he was appointed Knight Grand Cross of the Order of the British Empire for services to medicine, medical research and the life science industry. In 2017, he authored the UK Life Sciences Industrial Strategy.

# SPEAKERS



---

**Session 5**  
**Transforming Healthcare**  
*2:15pm–3:45pm*

**Professor Dame Anne M Johnson**  
University College London

Dame Anne Johnson is professor of infectious disease epidemiology at University College London. After training in medicine at Cambridge University and Newcastle University, she has focussed on research into the epidemiology and prevention of HIV, STIs, influenza, Ebola and antimicrobial resistance. Dame Anne co-directed the Medical Research Council UK Centre for Coordinating Epidemiological

Studies of HIV and AIDS from 1985 until 1999. She was principal investigator on the three decennial National Surveys of Sexual Attitudes and Lifestyles, co-founded UCL's Institute for Global Health, and has advised many national and international science organisations. She is currently vice-president international of the Academy of Medical Sciences and chaired its working group on Improving the Health of the Public by 2040. She is also a governor of the Wellcome Trust.



---

**Session 5**  
**Transforming Healthcare**  
*2:15pm–3:45pm*

**Professor Sir Simon Wessely**  
King's College London

Sir Simon Wessely is professor of psychological medicine and regius professor of psychiatry at King's College London and a consultant liaison psychiatrist at King's College Hospital and Maudsley Hospital. He is currently president of the Royal Society of Medicine, and is also past-president of the Royal College of Psychiatrists. His doctorate is in epidemiology, and he has over 700 original publications to his name,

with an emphasis on the boundaries of medicine and psychiatry, unexplained symptoms and syndromes, population reactions to adversity, military health and epidemiology. He has co-authored books on chronic fatigue syndrome, randomised controlled trials and the history of military psychiatry. In 2017, he was appointed chair of the Independent Review of the Mental Health Act 1983. He was knighted in 2013 for services to military healthcare and psychological medicine.



---

**Session 5**  
**Transforming Healthcare**  
*2:15pm–3:45pm*

**Professor Andrew Morris**  
Health Data Research UK

Since August 2017, Professor Morris has been the inaugural director of Health Data Research UK, the multi-funder UK institute for health and biomedical informatics. He is seconded from the University of Edinburgh, where he is professor of medicine, director of the Usher Institute of Population Health Sciences and Informatics, and vice principal of data science. Prior to arriving

in Edinburgh in 2014, Professor Morris was dean of medicine at the University of Dundee. He was chief scientist at the Scottish Government Health Directorate from 2012 to 2017 and has served on and chaired numerous national and international grant committees and governmental bodies. His research interests span informatics and chronic diseases. He has published over 300 original papers and has attracted over £50 million in grant funding. He was awarded a CBE in 2018.

# ATTENDEES

<b>108 Medical Chambers</b>	Miss Tena Walters
<b>127 Harley Street</b>	Dr Paul Bain
<b>Abramovich</b>	Mr Solomon Abramovich
<b>Academic Health Solutions</b>	Christopher Exeter Dr Amy-Jo Lynch Prof Sir John Tooke
<b>Academy of Medical Sciences</b>	Dr Helen Munn Dr Naho Yamazaki
<b>Advance Histopathology Laboratory Ltd</b>	Hodan Jama Prof Gordon Stamp
<b>ASI</b>	Kelvin Donald
<b>Association of Anaesthetists of Great Britain and Ireland</b>	Jenny Gowan
<b>Association of British HealthTech Industries</b>	Paul Benton
<b>Birmingham Women's &amp; Childrens's NHS Foundation Trust</b>	Prof Sir Bruce Keogh
<b>BMI Healthcare</b>	Jason Hession Trish O'Meara
<b>BNP Paribas</b>	Nick Hoof
<b>British Dental Association</b>	Martin Woodrow
<b>British Land</b>	Juliette Morgan James Rolton
<b>Bupa Cromwell Hospital</b>	Philip Luce
<b>Calthorpe Estates</b>	Mark Lee
<b>CBRE</b>	Kevin McCauley Andrew Surgenor
<b>Charles Russell Speechlys</b>	Jennifer Pierce
<b>Chelsea &amp; Westminster Hospital NHS Foundation Trust</b>	Paul Goodrich
<b>Cleveland Clinic</b>	Dr Brian Donley Dr Tommaso Falcone Travis Laird
<b>Corinthian</b>	Len Dunne
<b>Cushman &amp; Wakefield</b>	Fergus Forsyth Evi Georgadidis Ross JA Hepburn David Kerr Robert Murphy George Roberts

<b>Dental Health Holdings</b>	Mark Aichroth
<b>DLA Piper</b>	Bonella Ramsay
<b>Dr Haus Dermatology</b>	Kate Whitling
<b>ESPH</b>	Kamal Shah Alexei Sharp
<b>Fortius Clinic</b>	Jill Jansson Jim McAvoy
<b>Freshfields Bruckhaus Deringer</b>	Jennifer Bethlehem
<b>Geller Capital Partners</b>	Laurence Geller
<b>General Dental Council</b>	David Teeman
<b>Greater London Authority</b>	Cinar Altun
<b>Great Ormond Street Hospital NHS Foundation Trust</b>	Dr Melanie Hiorns
<b>Green Door Clinic</b>	Dr Najem Al-Falahe Rami Alfalahi Jenny Dew Sophie Millier
<b>Guy's and St Thomas' NHS Foundation Trust</b>	Dr Millicent Stone
<b>Harley Street Dental Group</b>	Dr Sudhir Jagasi
<b>Harley Street Medical Centre</b>	Nick Bird
<b>Harley Street Paediatric Group</b>	Dr Jack Singer
<b>HCA Healthcare UK</b>	Dr Cliff Bucknall Troy Coldrick Dr Peter Harper Jasy Loyal Janene Madden Michael Neeb Prof Christopher Nutting Clare Sullivan Zahra Sultan Aida Yousefi
<b>Health Data Research UK</b>	Prof Andrew Morris
<b>Healthcare UK</b>	Barry Francis Deborah Kobewka
<b>Hogan Lovells</b>	Emma Fulton
<b>HOK</b>	Daniel Hajjar Larry Malcic Allison Wagner

# ATTENDEES

<b>Imperial College London</b>	Prof Paul Freemont Prof Nicholas Peters
<b>Independent Consultant</b>	Ted Townsend
<b>Independent Doctors Federation</b>	Dr James MacKay Dr Brian O'Connor Sue Smith
<b>Isokinetic</b>	Mike Davison
<b>IVI UK</b>	Kristof Kunzmann
<b>JLL</b>	John Gladstone Chris Ireland Chris Walters
<b>John Bell &amp; Croyden</b>	James Gray Alexander Johnston
<b>King Edward VII's Hospital</b>	Robin Broadhurst Lindsey Condron Mr Robert Hensher Prof Justin Vale
<b>King's College London and Royal Society of Medicine</b>	Sir Simon Wessley
<b>KPMG</b>	Mark Britnell Edward Fitzgerald Roger Widdowson
<b>LaingBuisson</b>	Henry Elphick
<b>LaSalle Investment Management</b>	Natalia Kolotneva Alex Williams
<b>Lexihealth</b>	Annabelle Neame
<b>Linklaters</b>	Marly Didizian
<b>Lipton Rogers</b>	Sir Stuart Lipton
<b>Lloyds Bank</b>	Jane Clark-Hutchinson
<b>London Cardiovascular Clinic</b>	Prof Nicholas Peters
<b>London Claremont Clinic</b>	Lana Kopanja Hannah Ward
<b>London First</b>	Matthew Hill
<b>London Medical</b>	Dr Ralph Abraham David Briggs
<b>London Orthopaedic Clinic</b>	Cristina Emberton
<b>London Sleep Centre</b>	Dr Irshaad Ebrahim
<b>London Spine Unit</b>	Mr Mo Akmal Serap Akmal
<b>LSC Publishing</b>	Viel Richardson Mark Riddaway

<b>McKinsey &amp; Company</b>	Nicolaus Henke
<b>Medical Imaging Partnership</b>	Sarah Bricknell StJohn Brown
<b>Moorfields Private</b>	Jackie Brinicombe Maria Dimmock Tessa Green Tom Griggs
<b>NatWest</b>	Robert Fardon James Turnor Chris Richardson Katie Wright
<b>NHS Property Services</b>	John Westwood
<b>Nexus Group</b>	David Austin
<b>Nightingale Hospital</b>	Morgane Senez
<b>Norges Bank Real Estate Management</b>	Matthew Fellows Jayesh Patel
<b>Optegra Eye Hospital</b>	Baba Awopetu
<b>Oxford University Hospitals NHS Foundation Trust</b>	Tracey Davison
<b>Phoenix Hospital Group</b>	Aleks McNee
<b>Pinsent Masons</b>	Louise Dickson Louise Fullwood Robert Moir Kate Orviss
<b>Private Practitioner</b>	Liz Dale
<b>Psychiatric &amp; Psychological Consultant Services</b>	Brenda Moss Andrew Welch Dr Padraig Wright Deborah Young
<b>Queen Anne Street Medical Centre</b>	Kaushik Biswas Michael Craggs Dr Brian Leaker
<b>Re:Cognition Health</b>	Dr Emer MacSweeney Connor Moonan
<b>Royal Brompton &amp; Harefield Hospitals Specialist Care</b>	Dean Booth Sir Malcolm Green Baroness Sally Morgan Zohreh Palmer David Shrimpton
<b>Royal National Orthopaedic Hospital NHS Trust</b>	Eileen Scrase



# ATTENDEES

---

**Royal Society of Medicine** Nigel Collett  
Hilary De Lyon  
Dr Stephanie Kaye-Barrett  
Gemma Lamb  
Janice Liverseidge  
Richard Murley

---

**Savills** Colin Rees Smith

---

**Schoen Clinic London** Martina Ines Bielawski  
Andreas Ludowig

---

**The Chelsea Knee Clinic** Mr Sam Rajaratnam

---

**The London Clinic** Mr Satya Bhattacharya  
Jonathan Coad  
Peter Donelan  
Mark Hawken  
Rachel Hayes  
Simon Reiter  
Al Russell

---

**The London Global Practice** Dr Paul Ettlinger  
Richard Pisarski

---

**The London Scar Clinic** Natalia Pastuszak

---

**The Prostate Centre** Nicola Bentham  
Prof Roger Kirby

---

**The Royal Marsden NHS Foundation Trust** Shams Maladwala

---

**University College London** Prof Dame Anne Johnson

---

**University College London Hospitals NHS Foundation Trust** Prof Geoff Bellingan  
Dr Vassilis Georgiadis

---

**University Hospitals of Leicester NHS Trust** Caroline Gardiner-Hill

---

**University of Oxford** Prof Sir John Bell  
Prof Enda McVeigh

---

**University of Westminster** Prof Ipsita Roy

---

**US National Academy of Medicine** Dr Victor Dzau

---

**Wellcome Trust** James Hynard

---

**Westminster City Council** Cllr Heather Acton  
Cllr Karen Scarborough  
John Walker

---

## The Howard de Walden Estate team

---

**The Howard de Walden Estate** Paul Bakker  
Peter Barton  
Simon Baynham  
Julian Best  
Emma Fayers  
Marc Gilbard  
Jenny Hancock  
Sir Christopher Howes  
Andrew Hynard  
Claire Kennedy  
Mark Kildea  
Mark Musgrave  
Liz Peace  
Sir William Proby  
Maurice Thompson  
Sarah Walsh

---

## Media

---

**The Economist** Natasha Loder

---

**Health Service Journal** Alistair McLellan  
Annabelle Collins

---

**British Journal of Hospital Medicine** Rebecca Linssen

---

**The Lancet** Atrid James

---

**Healthcare Markets** Anna Cole-Bailey

---

**Pharmacy Business** Neil Trainis

---

**Four Communications** Sara Henriksson

---

# THE HOWARD DE WALDEN ESTATE

---

## THE HOWARD deWALDEN ESTATE



The Howard de Walden Estate owns, manages and leases the majority of real estate across 92 acres of Marylebone. The Harley Street Medical Area (HSMA), containing in excess of 1 million sq ft of medical space, falls largely within the Estate's boundaries.

Under the Estate's stewardship, the HSMA's reputation for medical excellence, innovation and patient experience has grown significantly, both nationally and internationally. A detailed survey carried out on behalf of the Estate in 2018 offers a clear indication of the notable contribution made by the HSMA to the UK medical sector and the wider economy:

- Approximately 1.7 million patient visits take place within the HSMA each year
- Around 20,000 people are currently employed within the HSMA, both full and part time
- The gross turnover of the HSMA is estimated to be £1.1 billion per annum

In order for the HSMA to continue to thrive, The Howard de Walden Estate is committed to providing strategic leadership and considerable investment.

While continuing to support and promote its established base of highly regarded practitioners and clinics, the Estate seeks to identify areas of specialism that might add to the current offering, and then aims to attract the most respected operators in those fields.

To draw the necessary profile of occupants, the Estate needs to ensure that its medical facilities are of the very highest calibre. The majority of the HSMA consists of Georgian, Victorian and Edwardian townhouses that have been converted into medical accommodation. While this historic building stock has a high aesthetic value, it requires frequent expert maintenance and adaptation in order to meet the demands of modern medicine. The Estate runs a constant programme of modernisation, which draws on an acute understanding of the highly specific needs of medical practitioners and aims to provide 18th and 19th century buildings with 21st century facilities.

As well as these refurbishment projects, the Estate also provides significant investment to create brand new or substantially redeveloped medical buildings, often conceived in partnership with medical providers and designed to complement the area's distinctive architectural landscape. The result is a large and varied portfolio of sophisticated medical facilities.

The following pages provide a glimpse of some of the Estate's medical projects.

# THE HOWARD DE WALDEN ESTATE

## Advanced Oncotherapy

141/143 Harley Street

The world's first linear proton beam therapy centre currently under construction and due to open in 2020.





# THE HOWARD DE WALDEN ESTATE

**Isokinetic**  
11 Harley Street

A bespoke reconfiguration and refurbishment to provide a sports rehabilitation centre within a period building.



# THE HOWARD DE WALDEN ESTATE

**King Edward VII's Hospital**  
Macintosh House,  
50-54 Beaumont Street

A new diagnostic facility and consulting house currently under construction and pre-let to King Edward VII's Hospital.





# THE HOWARD DE WALDEN ESTATE

## Schoen Clinic

64/66 Wigmore Street

A newly developed and fitted out orthopaedic hospital let to Schoen Clinic London.



---

This event is organised by  
The Howard de Walden Estate.  
The Estate is the guardian of  
the Harley Street Medical Area,  
which has been synonymous with  
medicine in this historic part of  
London for over 200 years.

**THE  
HOWARD  
de  
WALDEN  
ESTATE**

